

Directions by car

Directions car all directions

1. When approaching Amsterdam via the highway A1, A2 or A4, the RAI is indicated on the ring road.
2. On the ring road (A10), take the Amsterdam exit (S109) in the direction of the RAI Amsterdam.
3. At the end of the exit turn right onto Europaplein, direction RAI Parking.
4. Follow the signs towards P4 of the RAI, here you can park your car.
5. Take exit F and you will find Strandzuid across the square.

Direction car from A10

6. On the ring road (A10) take exit Amsterdam (S109) direction RAI Amsterdam.
7. At the bottom of the exit, turn right to Europaplein, in the direction of RAI Parking.
8. Follow the signs towards P4 of the RAI, here you can park your car.
9. Take exit F and you will find Strandzuid across the square.



Scan the QR Code for the route from
de ring road (A10) to parking garage RAI P4



Directions public transport

Station RAI

You can reach the station by train, metro, bus and tram. From RAI Station it is a 9-minute walk (750m) to Strandzuid.

Metrostation Europaplein

With the North/South line (metro 52) you can get off at Europaplein. From here it is a 2-minute walk (300m) to Strandzuid.

Station Zuid

You can reach the station by train, metro, bus and tram. From station Zuid it is a 15-minute walk (1.2km) to Strandzuid.

Scan the QR for the route description



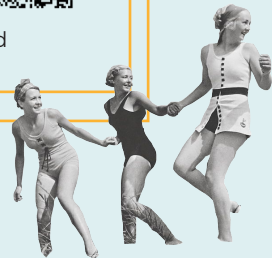
Station Rai



Metrostation
Europaplein



Station Zuid



Floorplan Parkingslot

